

# HARKEN®

## INSTRUCTIONS

### 1134 Small Boat Continuous Line-drive Furler

N15W24983 Bluemound Road • Pewaukee, WI 53072 U.S.A.

Telephone: (262) 691-3320 • Fax: (262) 701-5780 • Web: [www.harken.com](http://www.harken.com) • Email: [harken@harken.com](mailto:harken@harken.com)

#### Description, Features, and Requirements

Use the continuous line-drive furler for high-performance skiffs, dinghies, sportboats, and multihulls using large jibs, reaching, and offwind asymmetrical sails. It can also furl staysails on offshore boats.

#### Features:

- Drive sheave furler never runs out of line and can completely furl any sized sail.
- Line is easy to install and remove from sheave without disassembly.
- Offset holes in the drive sheave grip line securely.
- Stripper and feeder work together to prevent line from jamming.
- Line guard adjusts in 90-degree increments to accommodate attachments to the boat.

#### Requirements:

- Sail with torsion rope or 1 X 19 counter-laid stainless steel wire sewn into the luff with thimbles that are stitched to the tack and head so they will not turn.
- 164 upper swivel
- For a hoistable jib furling system, purchase an additional 464 hoistable halyard swivel and adapter tang. See instruction manual 4350 on [www.harken.com](http://www.harken.com)



Purchase separately

164 upper swivel

Hoistable system components

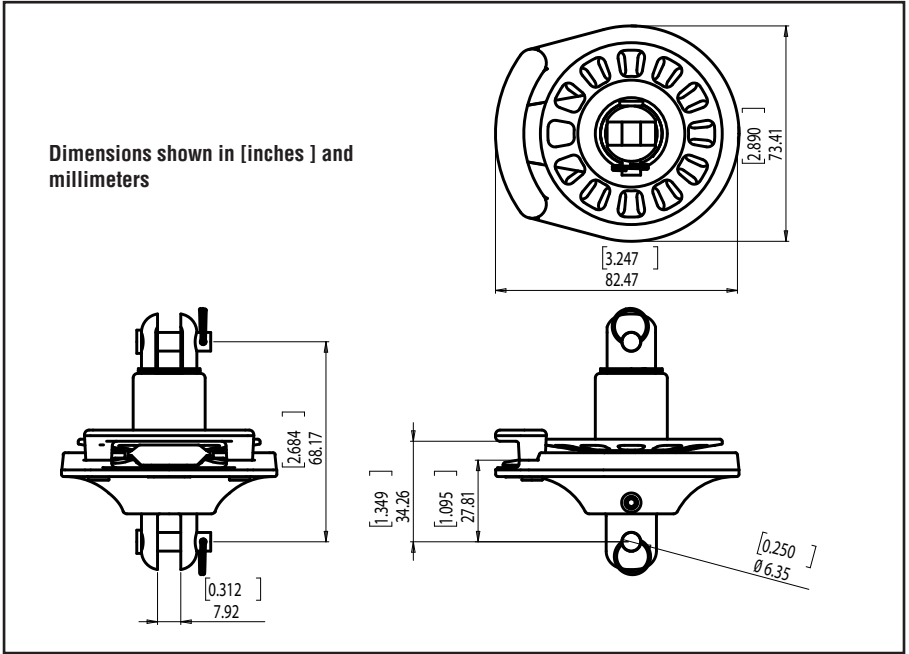
479, 480, 481 tangs

464 hoistable swivel

#### 1134 Specifications

Pin-to-pin length		Drum Ø		Line Ø		Jaw width		Max luff wire Ø		Clevis pin Ø		Weight		Maximum working load	
in	mm	in	mm	in	mm	in	mm	in	mm	in	mm	oz	g	lb	kg
2 11/16	68	2 7/8	73	3/16	5	5/16	8	1/8	3	1/4	6.4	5.4	154	950	431

## Dimensions



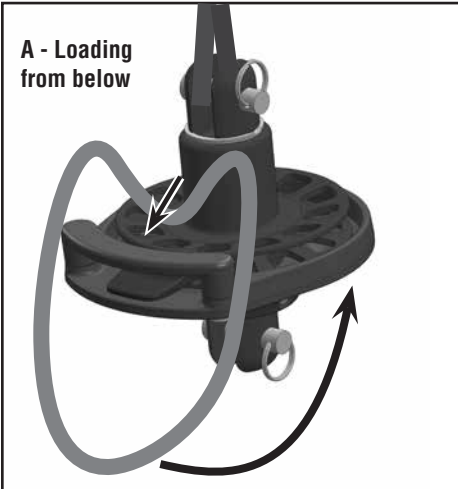
## Furling Line - Type and Loading

Consult rigger for best type of continuous furling line and end-for-end splice. A smooth splice is critical for smooth furling operation.

Loading line onto furler:

- Pass one end of loop into feeder, pull through, and pass the other end under the furler.
- Pass loop into the feeder and over the top.

Press the furling line into the drive sheave.



Short continuous loop shown to illustrate loading

## Rotating Guard

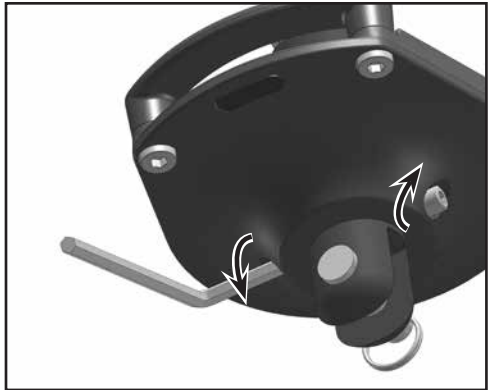
Use this procedure to change the clevis pin orientation for either fore/aft or athwartships direction to match boat's chainplate.

Loosen the screws about three rotations. The screws seat in detents. Rotate the lower fork so that it is 90°.

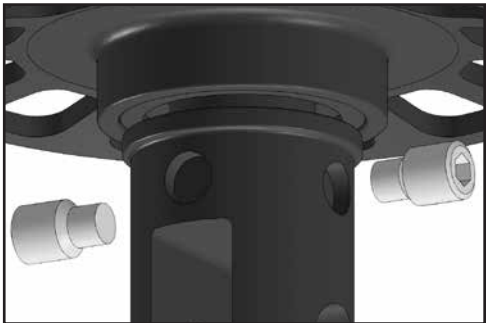
See image at bottom of page.



Use Blue Loctite® adhesive or alternate threadlocking solution on threads. Tighten the screws



The screws will seat in either of two pairs of detents. Leave guard in place for rotation. Image for illustration only



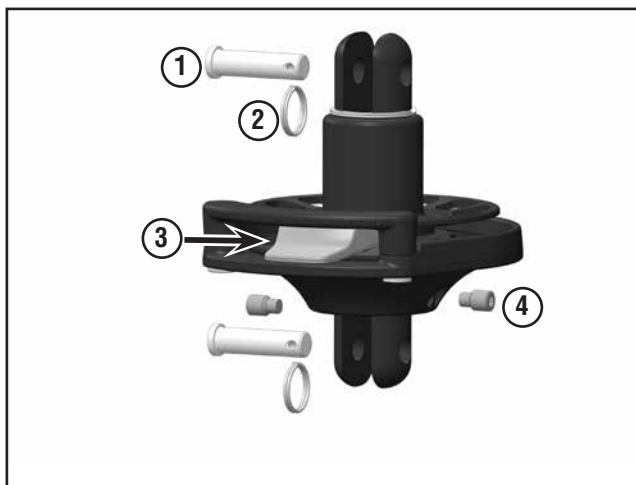
**Leave guard in place for rotation. Image for illustration only**

## Maintenance

Remove line from drive sheave. Clean furler with detergent and fresh water applied into drive sheave. Rotate drive sheave to distribute. Be sure to squirt into area just inside locking ring to clean bearings as shown by arrows at right. Flush with fresh water while rotating parts. Inspect pins and rings to make sure they are secure. Make sure parts are dry and free of saltwater for long term storage.



## Reorder Parts



### Replacement parts

Ref	Part number	Item name	Quantity
1	SP-008	CLEVIS PIN-.25X.789	2
2	MS-002	SPLIT RING-SB	2
3	MP-3053	STRIPPER-FURL SB CL	1
4	HFS1350	FST-M5X0.8X8MM EXTENDED PNT SET SCREW	2